



MediaCybernetics[®]
From Images to Answers[®]

IMAGING SOFTWARE

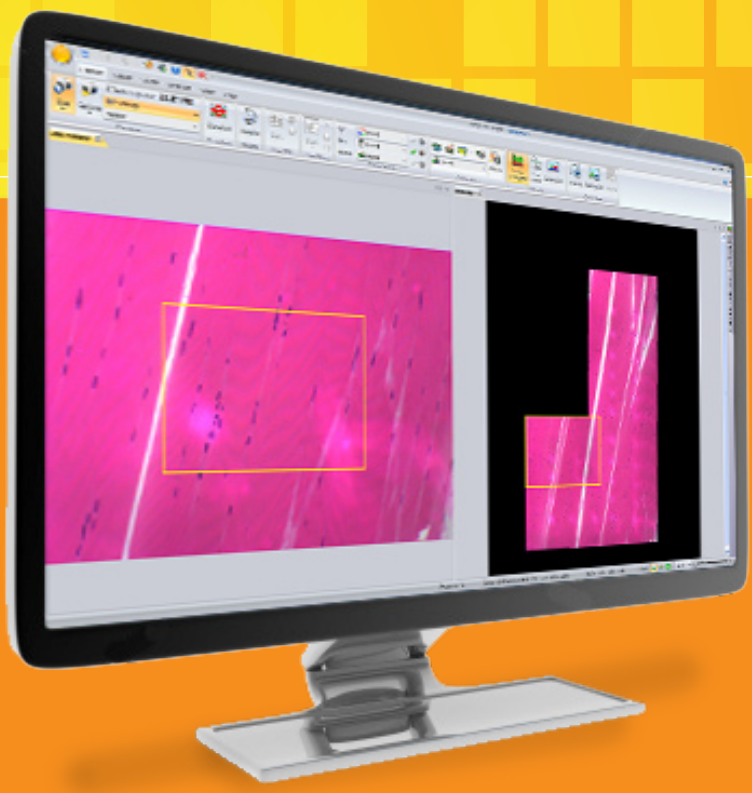


Image-Pro[®] Insight

Image Analysis Made Easy

Capture, Process, Measure, and Share

Image-Pro[®] Insight

Image Analysis Made Easy

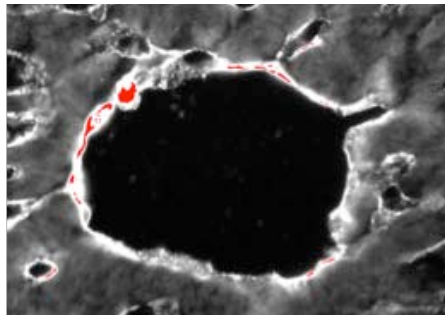
Capture, Process, Measure, and Share

Image-Pro Insight, the latest image analysis software from Media Cybernetics, offers a wide range of tools for capturing and analyzing images.

Unlike most imaging systems, which require extensive training, Image-Pro Insight was designed for quick startup and ease of use. Utilizing more than 25 years of user input, Image-Pro Insight offers intuitive tools that make it easy to capture and analyze images and extract valuable data from them.

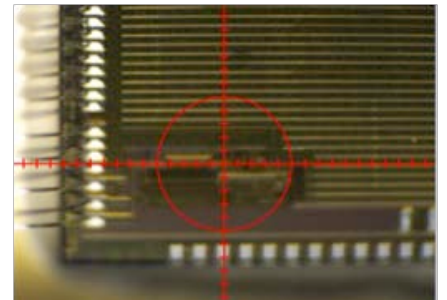
Capture with Ease

Capturing high-quality images is made easy with a range of acquisition tools. Image-Pro Insight supports an ever-growing list of scientific cameras along with TWAIN acquisition to ensure a superior out-of-the-box capture experience.



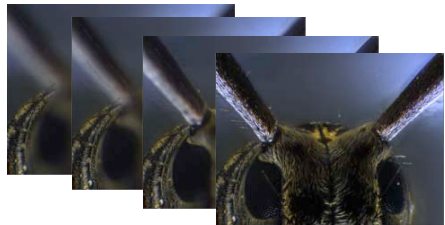
Saturation Warning on Live Preview

Receive an automatic visual cue to prevent you from acquiring saturated images.



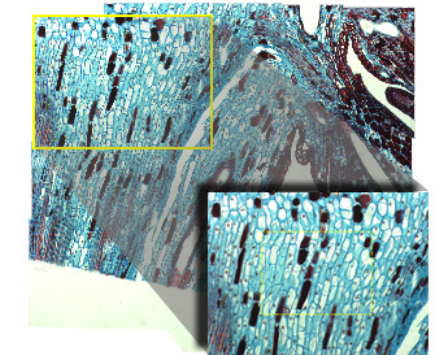
Crosshair on Live Preview

Use the crosshair overlay to ensure that images are correctly aligned while capturing. Select from a range of patterns, colors, and sizes.



Live Extended Depth of Field – No Automation Needed

Capture beautifully focused images, regardless of depth, with Live EDF. No automated z motor required.

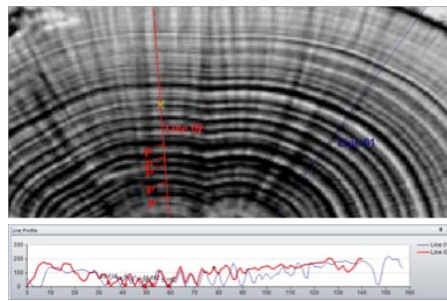
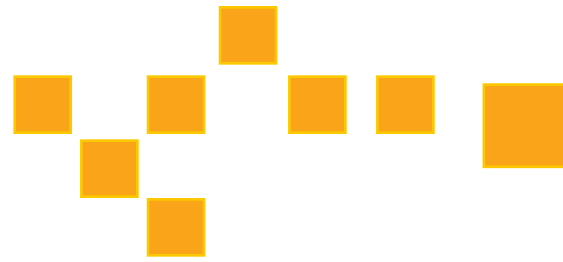
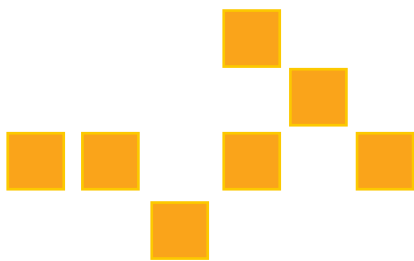


Live Tiling – No Automation Needed

Stitch together multiple fields of view as you manually move around your specimen with Live Tiling. Combine with Live EDF to create a focused, tiled image. No automated stage required.

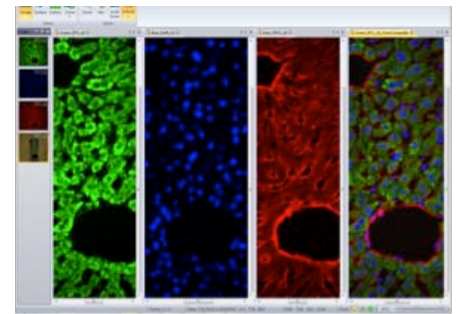
Process & Analyze

Implement sophisticated image processing and enhancement functions with two clicks or less. Image-Pro Insight offers a wide range of tools that make it easy to analyze and reveal important details within your images.



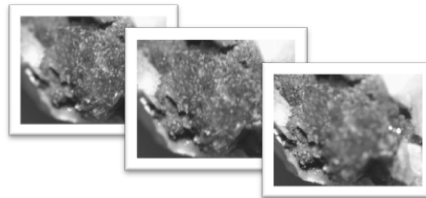
Interactive Line Profile

Add multiple line profiles to live or captured images.



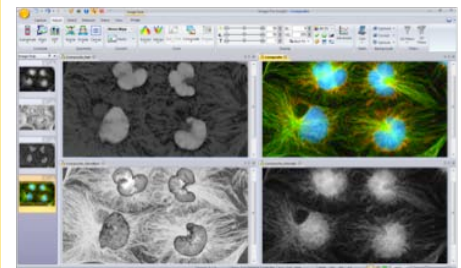
One-Click Color Composite

Build composite color images by simply right-clicking on each grayscale image to select a color tint.



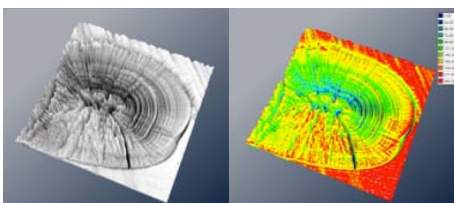
Auto-Alignment & Extended Depth of Focus

Correct for microscope shift with post-acquisition auto-alignment tools. Extended Depth of Focus (EDF) creates a focused image from a series of images captured at different z planes.



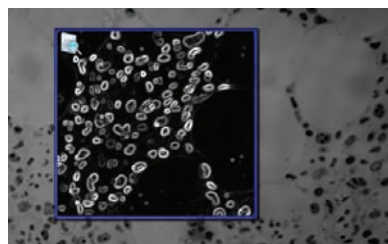
Extract & Merge Color Channels

Easily combine and separate images into RGB, HSI, and HSL color channels.



View Image Intensity with Surface Plot

Display a 3D graph of image pixel intensity with the Surface Plot tool. Visualize using texture, color, and wireframe settings, and create instant movies.



Correct for Noise & Enhance Detail with Filters

Remove background noise and reveal hidden details with an extensive set of image processing filters. Preview filters on your active image for instant results.

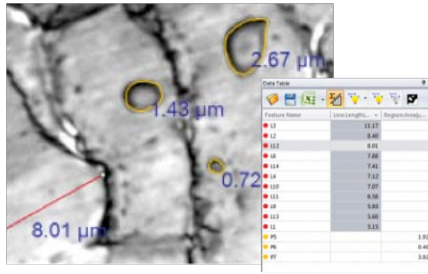


Navigate & Edit Time-Lapse Images in Gallery View

Navigate through time-lapse and image sequence files with the Gallery View tools.

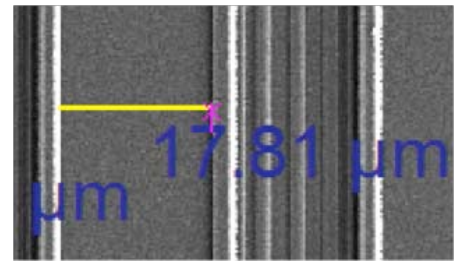
Measure & Quantify

Extract accurate data from your images with a wide range of measurement tools.



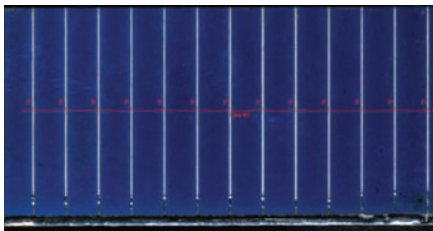
Classify Measurements

Use different colors, shapes, and custom names to classify and organize your measurement data.



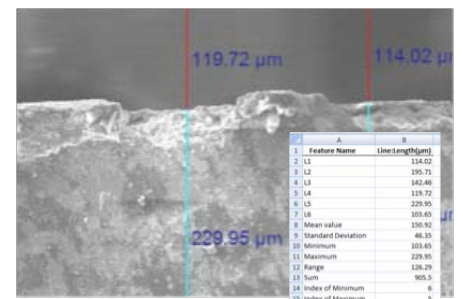
Magnetic Snap Measurements

Draw accurate line measurements every time with the Snap Measurement tools. Simply draw and the measurement will accurately snap along object edges.



Apply Caliper Measurements

Use the Line Profile/Caliper tool to measure pixel intensity along a line. Measure from peak to peak, origin to peak, peak to valley, and more.

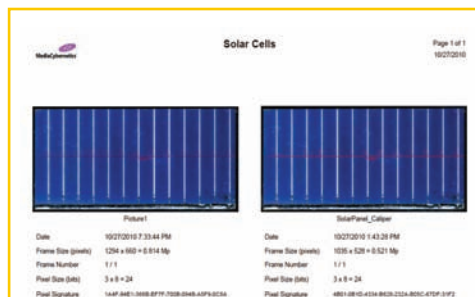


Export Measurement Data to Excel

Export measurements and data graphs to Excel.

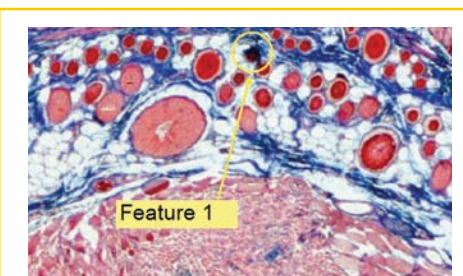
Report & Share

With Image-Pro Insight, it's easy to present your images and analysis data. Use one-click tools to export images, measurements, and annotations to Microsoft® Excel® as well as to popular presentation programs like PDF, Microsoft Word®, and Microsoft PowerPoint®.



Create Reports in PDF, Word & Excel

Share your images and data in easy-to-use report templates.



Annotation Tools

Point out features of interest with customizable annotation tools. Easily adjust fonts, colors, shapes, and more. Save these overlays on your images to share with others.

Join the Image-Pro® Analysis Community

Get Started with Free Video Tutorials

As an Image-Pro Insight user, you'll have access to a growing library of free 3- to 5-minute video tutorials. Learn time-saving tips and familiarize yourself with the wide range of analysis tools available to you – without ever having to leave your computer.

Technical Support

Register your copy of Image-Pro Insight to receive 90 days of complimentary technical support. Receive installation and configuration troubleshooting from our technical support engineers via phone or email. Extend your technical support beyond 90 days to receive expert support year-round.

Image-Pro Users Email List

When you choose Image-Pro software, you instantly join a community of image analysis professionals. Join the free Image-Pro users email list to ask questions and learn from other users.

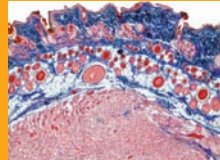
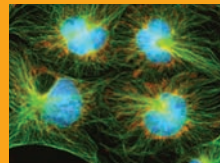
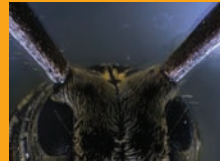
Upgrade to Image-Pro Plus

If you find your analysis needs growing beyond the tools in Image-Pro Insight, you can easily upgrade to Image-Pro Plus, which offers macro customization, automated counting/sorting, microscope and stage control, and other advanced options. Contact your local reseller or Media Cybernetics for details.

Free Video Tutorials

Designed To Meet Your Requirements

Life Science Applications



- Anatomy
- Animal Behavior
- Brightfield Microscopy
- Cell Biology
- Dendrochronology
- Developmental Biology
- Entomology
- Fluorescence Imaging
- Food Science
- Marine Biology
- Otolith and Fish Aging
- Pathology
- Time-Lapse Imaging

Industrial Applications



- Automotive Manufacturing
- Ceramics
- Coatings and Corrosion
- Concrete and Aggregate Analysis
- Cosmetics
- Failure Analysis
- Firearm and Toolmarks
- Forensic Analysis
- Geology
- Material Science
- Metallurgy
- Mineralogy
- Pharmaceutical Development
- Polymers
- Quality Control and Assurance
- Semiconductor Inspection
- Solar Cell Quality Control
- Surface Characterization
- Textile / Fiber
- Trace Evidence

Features Overview

Capture

Single frame & movie acquisition

Live tiling & EDF

Crosshair grid on live image display

TWAIN acquisition

Process & Analyze

Post-acquisition alignment & EDF

Frame averaging

Color composite

Pseudocolor

Image math

Filters – enhancement, edge, large, morphological

Binary mask

Sequence / movie editing

Measure & Quantify

Advanced line profile analysis

Manual measurements

Measure live images

Snap measurements

Best-fit measurements

Classify measurements

Interactive data table

Data histogram

Report & Share

Annotation tools

Quick save for publication & analysis

Export to Excel, PowerPoint & Word

Reporting tools (including PDF)

Create snapshot of zoomed view

Create snapshot with overlays

View

Surface plot view & movie creator

Gallery view

Lock & zoom multiple images

Zoomed image navigator

Full-screen mode

System Requirements

Supported Operating Systems:

Microsoft Windows® XP SP 3 and later – 32 bits

Microsoft Windows Vista® Business and Ultimate SP 2 and later – 32 and 64 bits

Microsoft Windows 7 Professional and Ultimate – 32 and 64 bits

Minimum:

- Intel® Pentium® 4 or AMD Athlon™ 64 processor
- 2 GB of RAM
- 500 MB of available hard-disk space
- DVD/CD-ROM drive
- Microsoft .NET Framework 3.5 (automatically installed by application)
- USB port required for hard licenses and offline license activation
- Internet connection required for online services

Recommended:

- Dual- or multi-core processor
- 4 GB of RAM or more
- 20 GB or more of available hard-disk space (suggested storage size if acquiring large image files)
- DVD/CD-ROM drive
- Microsoft .NET Framework 3.5 (automatically installed by application)
- USB port required for hard licenses and offline license activation
- Internet connection required for online services

Specifications are subject to change. Please contact Media Cybernetics or your local reseller for the latest features.

Supported File Formats

Description	Extension(s)	Write	Read
TIFF	*.tif, *.tiff	X	X
JPEG	*.jpeg, *.jpg	X	X
JPEG 2000	*.jp2, *.jpf	X	X
Windows Bitmap	*.bmp	X	X
PNG File	*.png	X	X
Image-Pro Sequence	*.seq	X	X
AVI Movie File	*.avi	X	X



MediaCybernetics
From Images to Answers®

Media Cybernetics, Inc.
North & South America: + 1 301 495 3305
Europe, Middle East & Africa: +44 (0)1628 477025
China: +(86)21 33773539
Asia, Australia, India & New Zealand: + 65 6408 6245
Japan: +81 3 5639 2751

www.mediacy.com | info@mediacy.com

Copyright © 2011 Media Cybernetics, Inc.
All rights reserved.
Media Cybernetics, the Media Cybernetics logo, and Image-Pro are registered trademarks of Media Cybernetics, Inc.
All other trademarks are used with permission and remain the property of their respective owners.